

CH 1. Blackberry Operation System

(Software Installation and Operation)

System requirements :

Mobile Device operation platform : Blackberry 9000

Internet needed for Mobile device operation platform (GPRS/ 3G/ Wifi...etc.)

1-1 Software installation

In order to remote log in to DVR to live monitoring through mobile device, first of all, please follow the instructions for software installation:

Step 1: Visit Blackberry official website

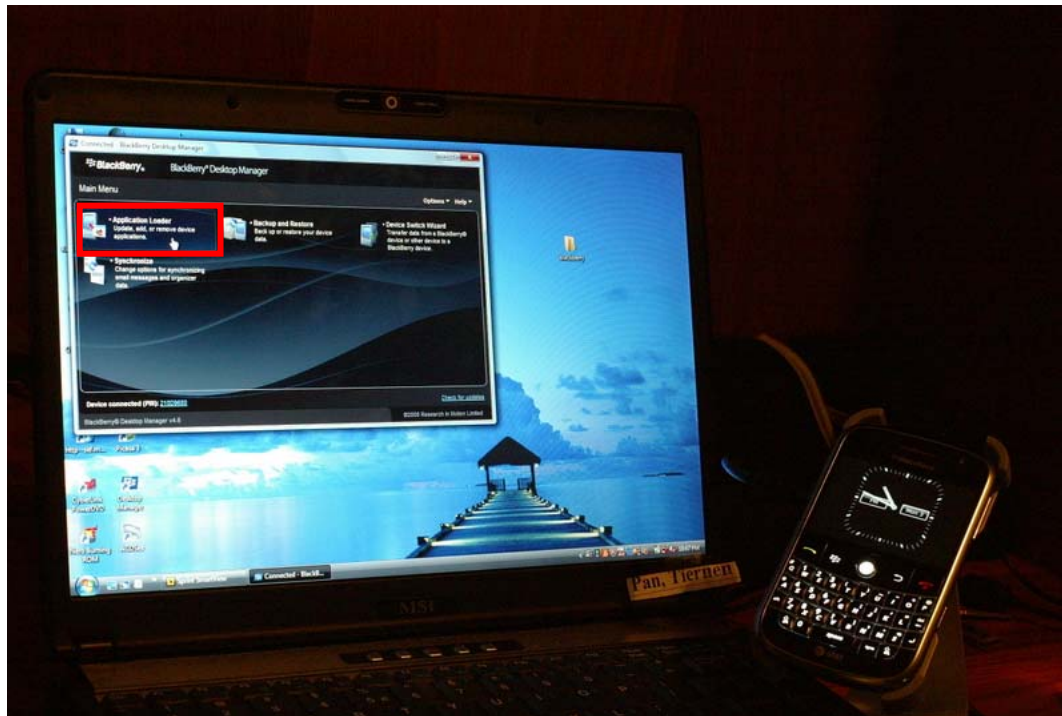
<http://na.blackberry.com/eng/services/desktop/> www.blackberry.com.

Download Blackberry Desktop Manager v4.6 and install it in PC

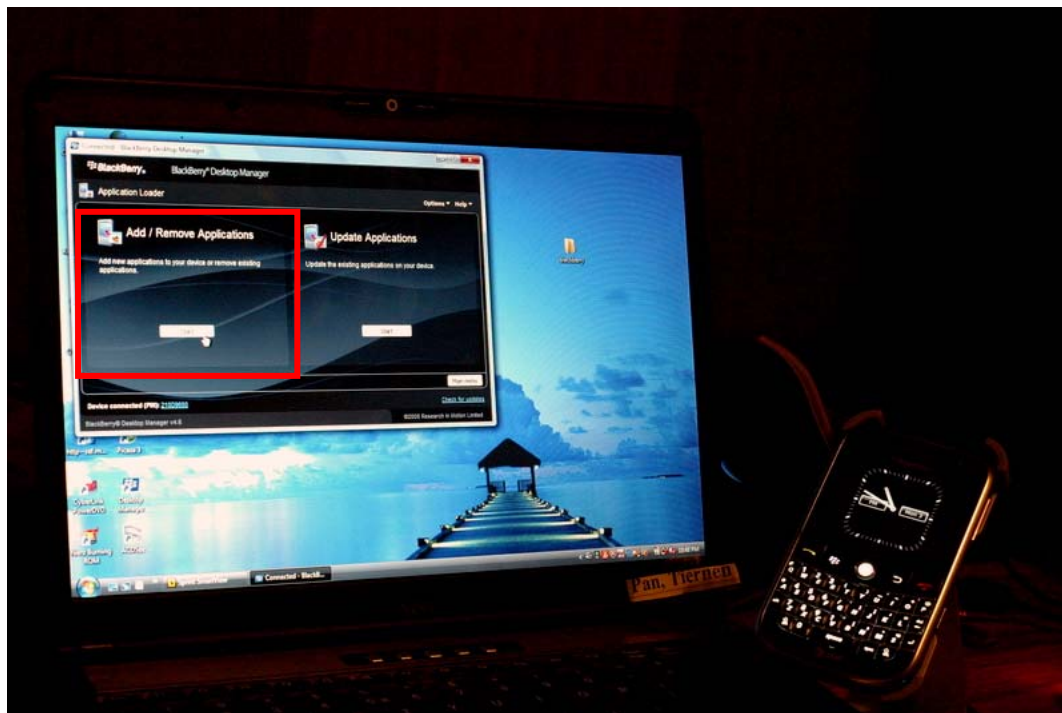
Step 2: Connect Blackberry USB transmission cable to Blackberry and PC. Activate Blackberry Desktop Manager v4.6 on PC and it will automatically connect to Blackberry momentarily.



Step 3 : Execute"Application Loader"



Step 4: Execute "Add/Remove Applications"



Step 5: Please copy"codname.alx" and "codname.cod" to PC.
The software is available on our webpage or in the User CD that comes with each of
DVR.

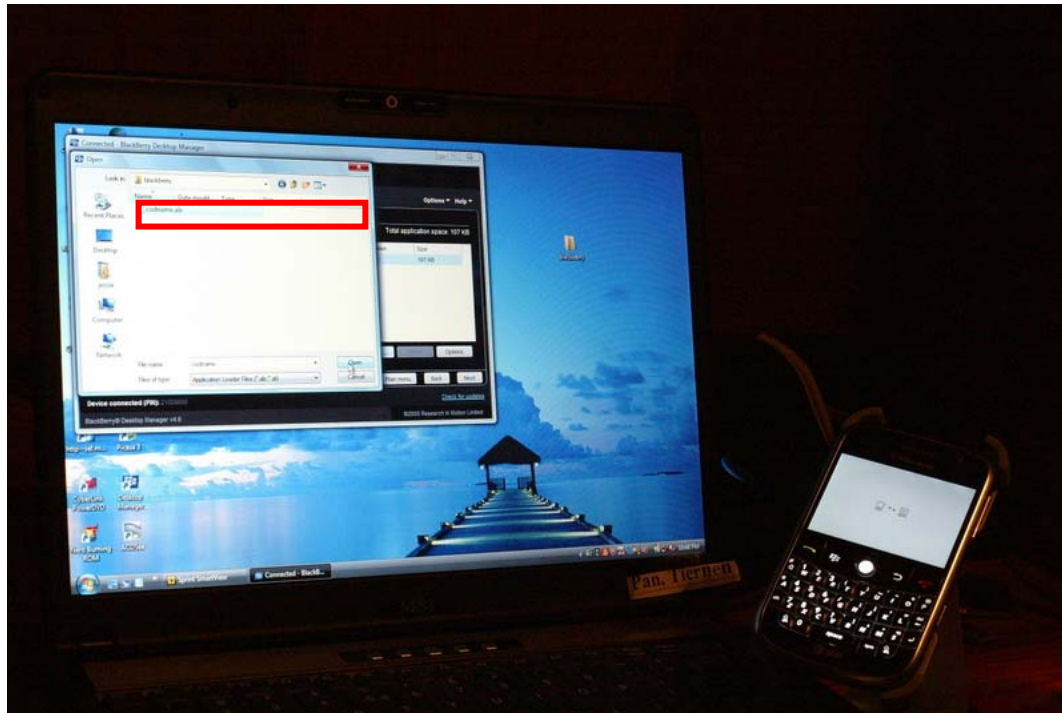


codname.alx
ALX 檔案
1 KB



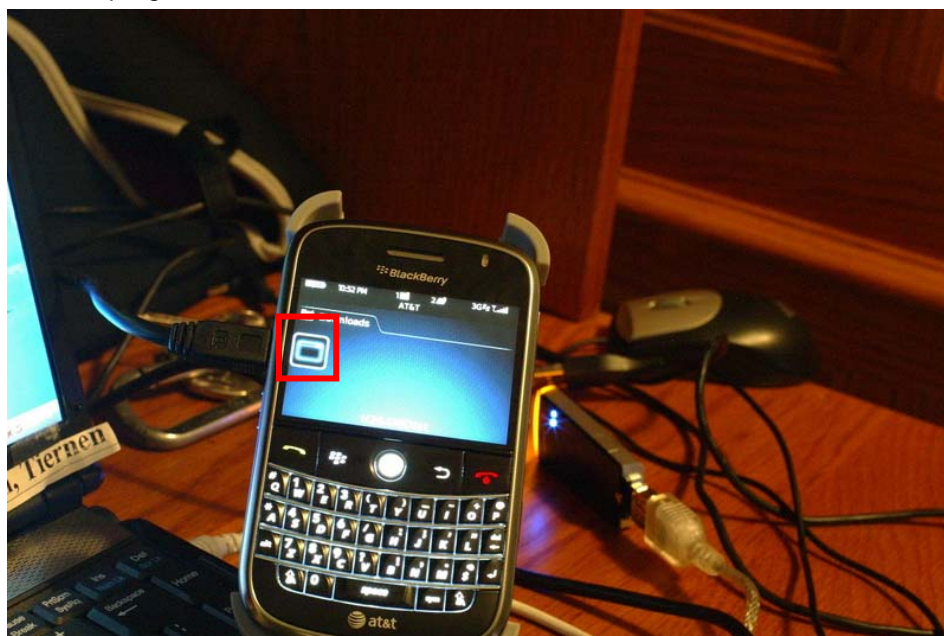
codname.cod
COD 檔案
108 KB

Step 6: Find “codename.alx” in Blackberry Desktop Manager v4.6. After activating the software, press “Next.” The software will be installed in Blackberry automatically. Remove USB cable after installation.



1-2 Software operation

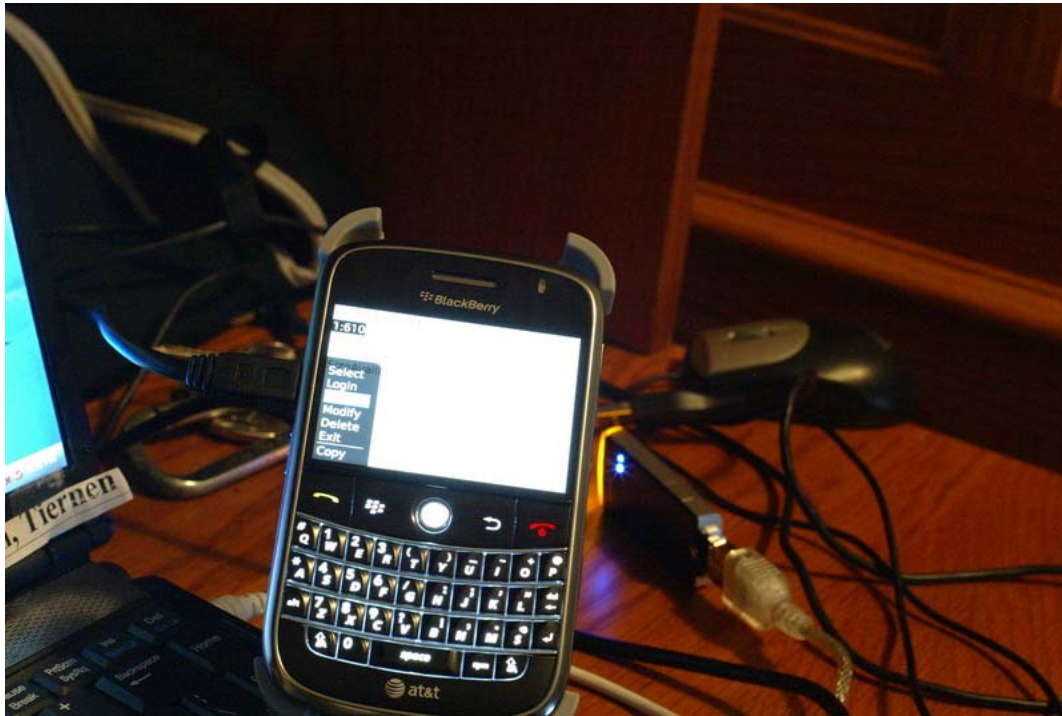
After the software is installed completely, enter “Download” menu in the mobile device and execute program, “H.264Midlet”



1-2.1 Add new log-in informatio

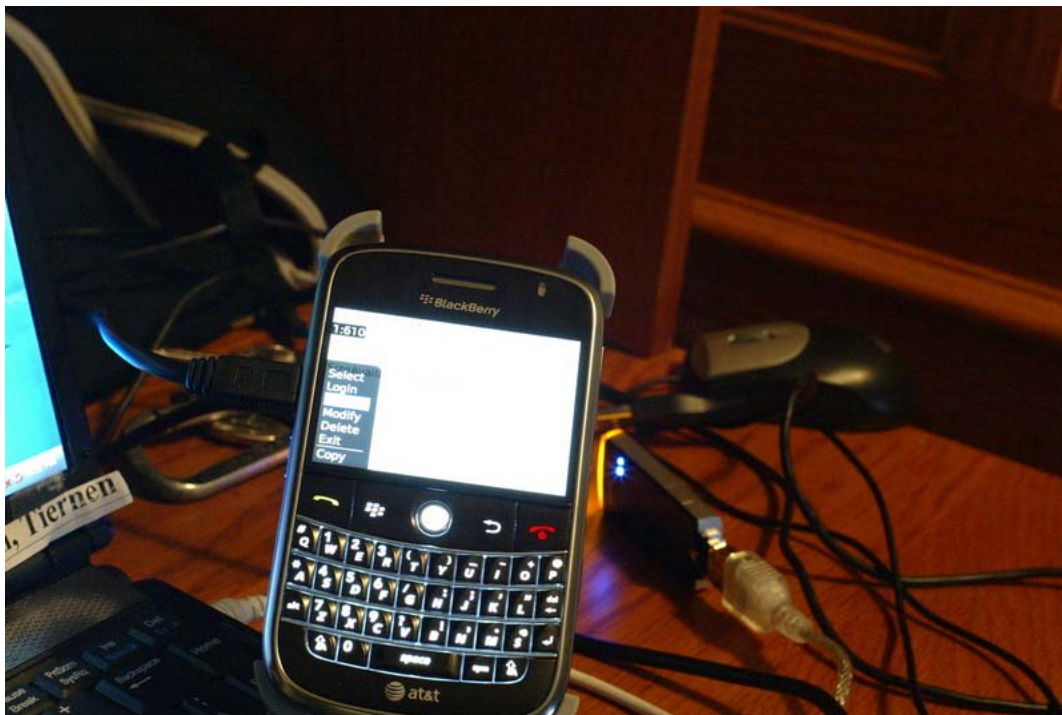
In order to connect to DVR, please input DVR information to the mobile device.

Press "option" → "Add", and then enter "DVR IP," "port," "log-in account," and, "log-in password." Press "ok" to save.

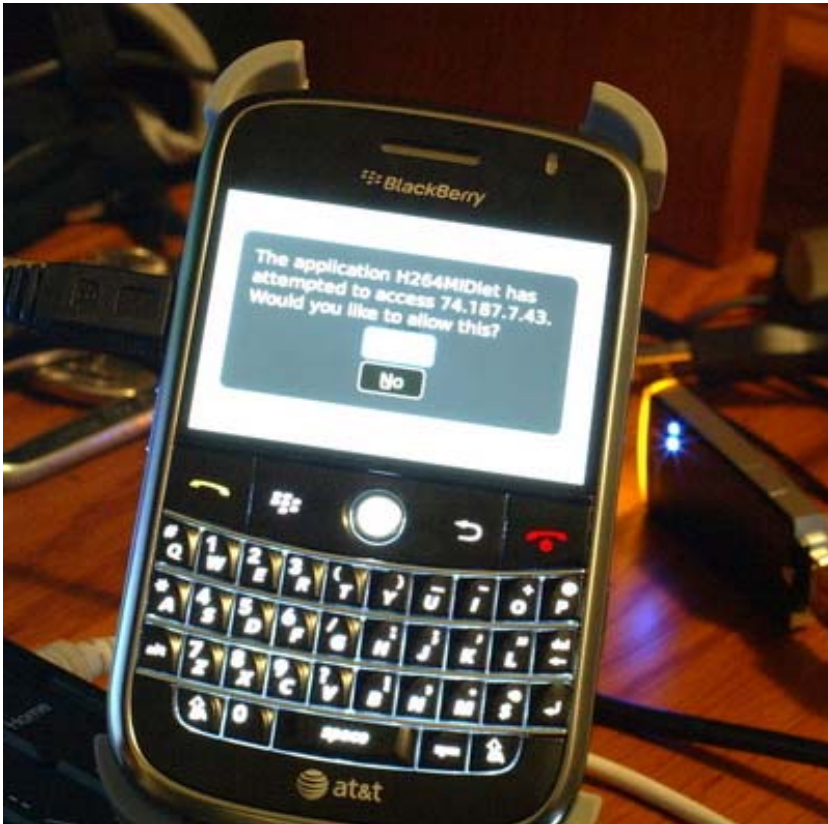


1-2.2 Log in to DVR

Multiple DVR information can be saved with this software, therefore, please choose the DVR that's wished to be connected. Press "Option" → "Login" to log in to DVR for live monitoring.

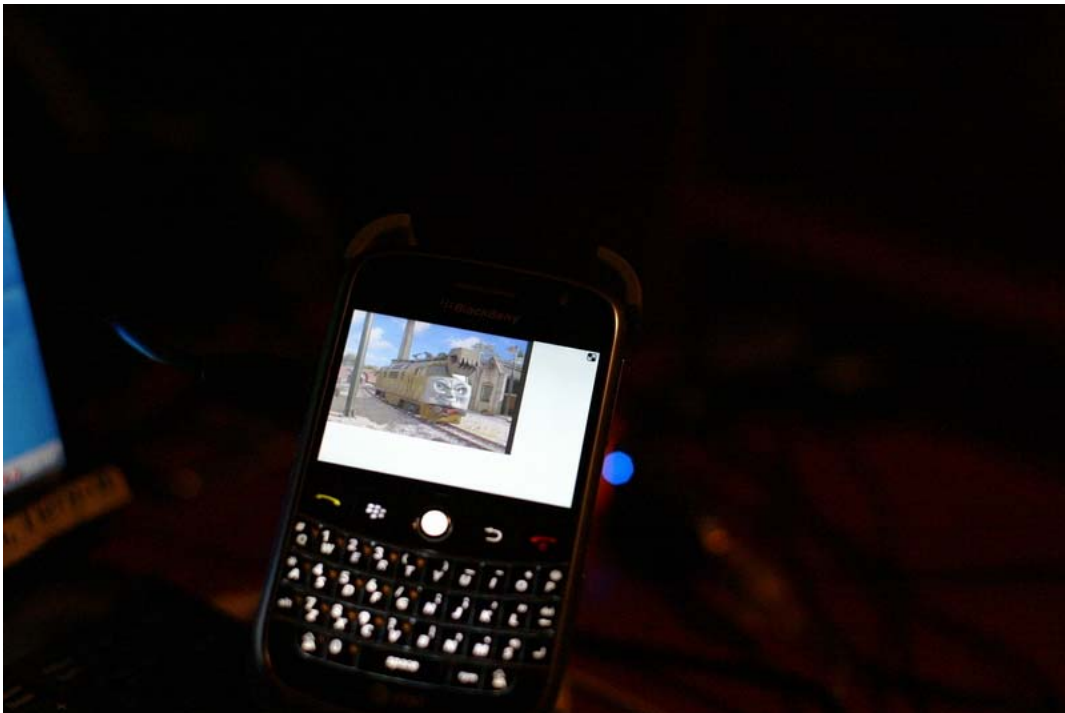


Before connection, there might be a packet download confirmation message appears in some of the mobile devices. Press "Yes." Transmission fee will depend on the Internet provider and packet download charge.



Connecting time depends on the Internet transmission environment.

Connect successfully. DVR image appears.



Note : If recording function isn't on for any channel in DVR end, that channel will not be available for live monitoring.

1-2.3 Modify DVR Existing Record (Log-in Information)

If DVR log-in information is wished to be modified, please select the DVR. Enter "Option" → "Modify" for editing the existing data. Press "OK" when it's finished.

The diagram illustrates the process of modifying DVR log-in information. It starts with the 'Existing Record' screen, which shows a list of records (1:admin) and a menu with options: 1 Login, 2 Add, 3 Modify, and 4 Delete. The 'Modify' option is selected. An arrow points to the 'Edit Data' screen, which displays fields for IP (225.242.131.112), PORT (80), ACCOUNT (admin), and PASSWORD (*****). The 'Edit Data' screen has 'Back' and 'OK' buttons at the bottom.

1-2.4 Delete DVR Existing Record (Connection Information)

If DVR connection information is no longer needed, please select the DVR. Press "Option" → "Delete" to delete the DVR connection information.

The screenshot shows the 'Existing Record' screen with a list of records (1:admin, 2:user) and a menu with options: 1 Login, 2 Add, 3 Modify, and 4 Delete. The 'Delete' option is selected. The screen has 'Exit' and 'Menu' buttons at the bottom.

1-3 Live Image Operation

After successfully connecting to DVR, single channel view, image display changes, image quality adjustments, alarm on/off features ... etc. are available through the software.

1-3.1 Live Image Display

When viewing live images, please select “Single.” There is channel 1 to 16 available.



Note : If recording function isn't on for any channel in DVR end, that channel will not be available for live monitoring.

1-3.2 Image size

Due to the variety sizes of mobile device screens, this software offers two different methods for image display. Press “Size” in menu, and then there will be options, “Original” and “Fit Screen” available to choose from.

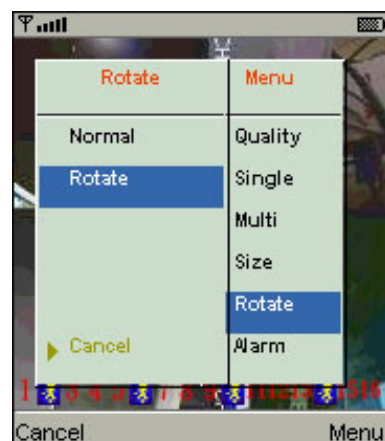


Option	Description
Original	Image appears as its original size.
Fit Screen	Image appears to be the most optimized size according to the screen.

1-3.3 Image Rotation




There are two options for live image display. One is to appear as its original image, or to rotate the image by 90 degrees.

Press “Rotate” in menu and there will be options, “Normal” and “Rotate” available to choose from.



1-3.4 Alarm

Besides DVR live monitoring, alarm feature is also available through this software. If events like, Motion Detection, Sensor Detection, VLOSS ...etc. occur, there will be alarm sound and alarm images appear on the status.

Icon	Description
	Motion Detection
	Sensor Detection
	VLOSS

Press “Alarm” in menu, there will be options, “Alarm OFF” and “Alarm ON” available to choose from.



Ch2. iPhone Operation System

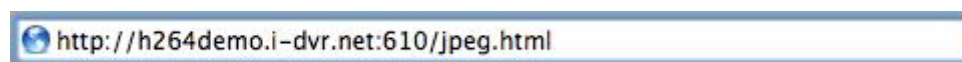
Embedded Browser, "Safari" Log-in Instructions

1. Enter DVR website address

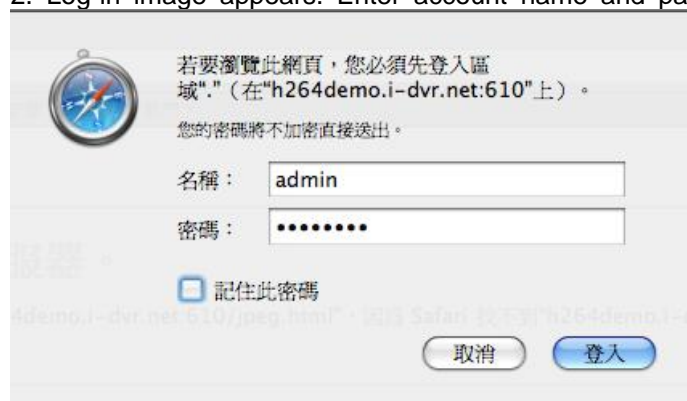
For example, if the Demo Site is <http://h264demo.i-dvr.net:610>

Please add"/jpeg.html" followed by the address.

Therefore, please enter: <http://h264demo.i-dvr.net:610/jpeg.html>



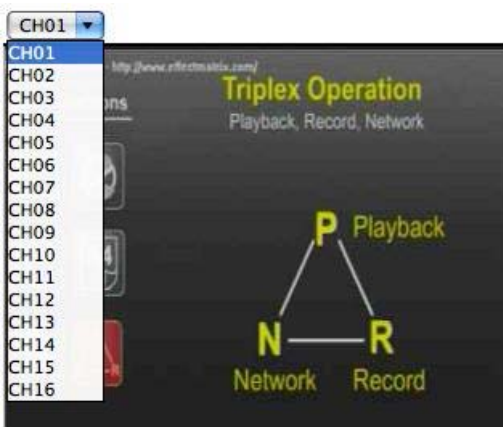
2. Log-in image appears. Enter account name and password.



3. CH1 live image appears after log-in



4. Click on scroll box to switch between channels



5. Image appears after switching to CH2



6. Comparisons between different mobile phones AP

Mobile Phone	Symbian & Windows Mobile& Blackberry	iPhone
Monitor method	Need to download AP	Monitor through embedded browser
Switich C hannel	Yes	Yes
Alarm	Yes	No
Full Screen	Yes	No